



LINEA
collection

LUXURY SPC FLOORING



INNOVATIVE FLOORING

THICKNESS : 3 TO 7 MM
WEAR LAYER : 0.3 AND 0.5 MM
SIZE : 180 X 1220 MM
FINISH : MATT
INSTALLUTION METHOD : UNILIN UNICLIC

MAPLE WOOD WHITE





THICKNESS	:	3 TO 7 MM
WEAR LAYER	:	0.3 AND 0.5 MM
SIZE	:	180 X 1220 MM
FINISH	:	MATT
INSTALLUTION METHOD	:	UNILIN UNICLIC

TRES NATURALE



THICKNESS	:	3 TO 7 MM
WEAR LAYER	:	0.3 AND 0.5 MM
SIZE	:	180 X 1220 MM
FINISH	:	MATT
INSTALLUTION METHOD	:	UNILIN UNICLIC

WHITE LIMBA WOOD



THICKNESS	:	3 TO 7 MM
WEAR LAYER	:	0.3 AND 0.5 MM
SIZE	:	180 X 1220 MM
FINISH	:	MATT
INSTALLUTION METHOD	:	UNILIN UNICLIC

BUTTERNUT





THICKNESS	:	3 TO 7 MM
WEAR LAYER	:	0.3 AND 0.5 MM
SIZE	:	180 X 1220 MM
FINISH	:	MATT
INSTALLUTION METHOD	:	UNILIN UNICLIC

SPANISH CEDAR



THICKNESS : 3 TO 7 MM
WEAR LAYER : 0.3 AND 0.5
SIZE : 180 X 1220 MM
FINISH : MATT
INSTALLUTION METHOD : UNILIN UNICLIC

ANTIQUÉ PINE



THICKNESS	:	3 TO 7 MM
WEAR LAYER	:	0.3 AND 0.5 MM
SIZE	:	180 X 1220 MM
FINISH	:	MATT
INSTALLUTION METHOD	:	UNILIN UNICLIC

RED BEECH





THICKNESS	:	3 TO 7 MM
WEAR LAYER	:	0.3 AND 0.5 MM
SIZE	:	180 X 1220 MM
FINISH	:	MATT
INSTALLUTION METHOD	:	UNILIN UNICLIC

TIGER WOOD



THICKNESS : 3 TO 7 MM
WEAR LAYER : 0.3 AND 0.5
SIZE : 180 X 1220 MM
FINISH : MATT
INSTALLUTION METHOD : UNILIN UNICLIC

EBONY WOOD



THICKNESS	:	3 TO 7 MM
WEAR LAYER	:	0.3 AND 0.5
SIZE	:	180 X 1220 MM
FINISH	:	MATT
INSTALLUTION METHOD	:	UNILIN UNICLIC

CHESTNUT CHERRY



THICKNESS	:	3 TO 7 MM
WEAR LAYER	:	0.3 AND 0.5
SIZE	:	180 X 1220 MM
FINISH	:	MATT
INSTALLUTION METHOD	:	UNILIN UNICLIC

CARAMEL BROWN





THICKNESS	:	3 TO 7 MM
WEAR LAYER	:	0.3 AND 0.5 MM
SIZE	:	180 X 1220 MM
FINISH	:	MATT
INSTALLUTION METHOD	:	UNILIN UNICLIC

DARK WALNUT



THICKNESS : 3 TO 7 MM
WEAR LAYER : 0.3 AND 0.5
SIZE : 180 X 1220 MM
FINISH : MATT
INSTALLUTION METHOD : UNILIN UNICLIC

BRUNETTE WOOD



THICKNESS	:	3 TO 7 MM
WEAR LAYER	:	0.3 AND 0.5 MM
SIZE	:	180 X 1220 MM
FINISH	:	MATT
INSTALLUTION METHOD	:	UNILIN UNICLIC

DEEP CHARCOAL





THICKNESS	:	3 TO 7 MM
WEAR LAYER	:	0.3 AND 0.5 MM
SIZE	:	180 X 1220 MM
FINISH	:	MATT
INSTALLUTION METHOD	:	UNILIN UNICLIC

SLATE GREY



THICKNESS	:	3 TO 7 MM
WEAR LAYER	:	0.3 AND 0.5 MM
SIZE	:	180 X 1220 MM
FINISH	:	MATT
INSTALLUTION METHOD	:	UNILIN UNICLIC

CREAM BONE





THICKNESS	:	3 TO 7 MM
WEAR LAYER	:	0.3 AND 0.5
SIZE	:	180 X 1220 MM
FINISH	:	MATT
INSTALLUTION METHOD	:	UNILIN UNICLIC

PACIFIC PEARL



THICKNESS : 3 TO 7 MM
WEAR LAYER : 0.3 AND 0.5 MM
SIZE : 180 X 1220 MM
FINISH : MATT
INSTALLUTION METHOD : UNILIN UNICLIC

GREYWOOD



THICKNESS	:	3 TO 7 MM
WEAR LAYER	:	0.3 AND 0.5
SIZE	:	180 X 1220 MM
FINISH	:	MATT
INSTALLUTION METHOD	:	UNILIN UNICLIC

OAK WOOD GREY





THICKNESS	:	3 TO 7 MM
WEAR LAYER	:	0.3 AND 0.5 MM
SIZE	:	180 X 1220 MM
FINISH	:	MATT
INSTALLUTION METHOD	:	UNILIN UNICLIC

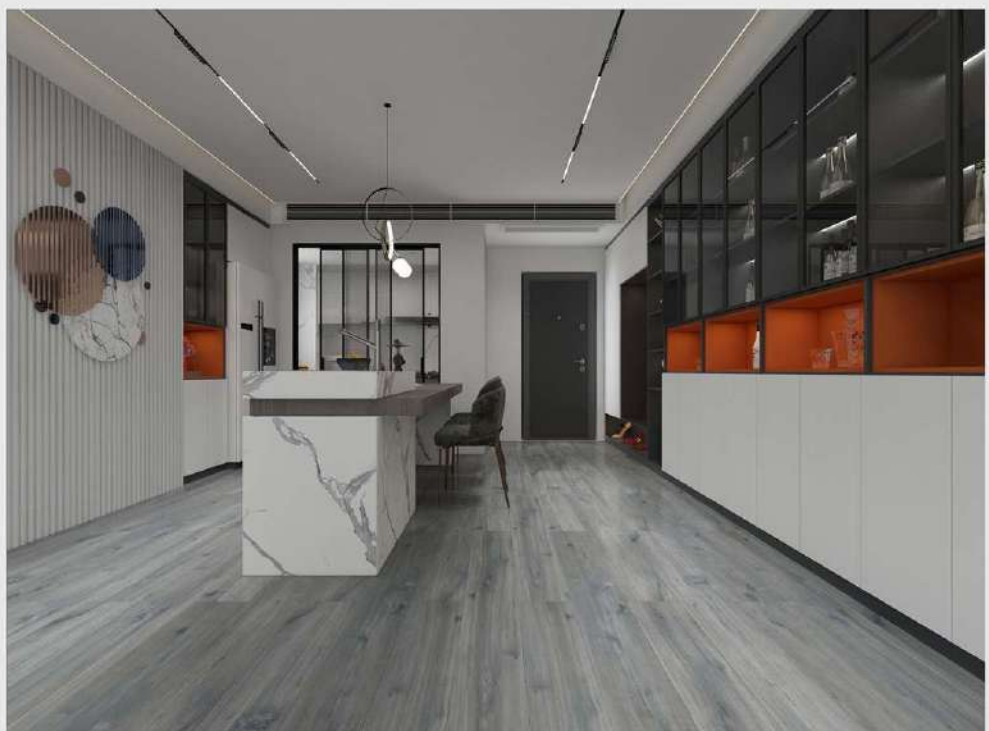
HICKORY WOOD





THICKNESS	:	3 TO 7 MM
WEAR LAYER	:	0.3 AND 0.5
SIZE	:	180 X 1220 MM
FINISH	:	MATT
INSTALLUTION METHOD	:	UNILIN UNICLIC

CARBON GREY



THICKNESS	:	3 TO 7 MM
WEAR LAYER	:	0.3 AND 0.5
SIZE	:	180 X 1220 MM
FINISH	:	MATT
INSTALLUTION METHOD	:	UNILIN UNICLIC

MAHOGANY WOOD



TECHNICAL SPECIFICATION FOR SPC

Specification	Property	Test Method	Result
SPC core thickness : 4 to 7 mm	Dimensions	EN 427	1220*180mm
	Thickness Over All	EN 428	3.0 mm, 4.0 mm, 5.0 mm, 7.0 mm
Wear layer : 0.3/0.5 mm	Thickness Wear Layer	EN 429	0.3 mm, 0.5 mm
	Pell Strength of Layers	EN 431	Pass
Plank size : 180x1220 mm, 302x604 mm	Shear Forces of Layers	EN 432	Good
	Residual Indentations	EN 433	Mean Value \leq 0.1mm
Padding : IXPE Black 1.00 / 1.50 mm	Dimension Stability	EN 434	Shrinkage \leq 0.12%/Curling \leq 1.2mm
	Resistance to Chemicals	EN 423	Class 0
Material : 100% Virgin	Castot Chair Continuous	EN 425	No Disturbance/No Delamination
	Light Fastness	ISO 105 B02	\geq 6
Click lock : Unilin Uniclic	ASTM E84-03	NFPA Class B1	R9
	Slip Resistance	DIN 51130	
Warranty : 15 years residential and 10 years commercial			

PACKING DETAILS

TOTAL PLANK THICKNESS	5 MM	6 MM	7 MM
Sqm per Box	2.6352	2.196	1.7568
No of plank per box	12	10	8
Kg Per Box	22.8	22.8	22.8
Box Per Pallet	60	60	60
Pallet Per Container	18	18	18
Total no. of boxes in container	1080	1080	1080
SQM Per Container	2846.02	2365.2	1897.34
Weight per 20' Container	24624	24624	24624
Weight of all pallets	700	700	700
Total Gross Weight	25324	25324	25324

TECHNICAL SPECIFICATION

Specification	Property	Test Method	Result
SPC core thickness : 4 to 7 mm	Dimensions	EN 427	1220*180mm
Wear layer : 0.3/0.5 mm	Thickness Over All	EN 428	3.0 mm, 4.0 mm, 5.0 mm, 7.0 mm
	Thickness Wear Layer	EN 429	0.3 mm, 0.5 mm
Plank size : 180x1220 mm, 302x604 mm	Pell Strength of Layers	EN 431	Pass
	Shear Forces of Layers	EN 432	Good
Padding : IXPE Black 1.00 / 1.50 mm	Residual Indentations	EN 433	Mean Value ≤ 0.1mm
	Dimension Stability	EN 434	Shrinkage ≤ 0.12%/Curling ≤ 1.2mm
Material : 100% Virgin	Resistance to Chemicals	EN 423	Class 0
	Castot Chair Continuous	EN 425	No Disturbance/No Delamination
Click lock : Unilin Uniclic	Light Fastness	ISO 105 B02	≥ 6
	ASTM E84-03	NFPA Class B1	R9
Warranty : 15 years residential and 10 years commercial	Slip Resistance	DIN 51130	

PACKING DETAILS

TOTAL PLANK THICKNESS	5 MM	6 MM	7 MM
Sqm per Box	2.6352	2.196	1.7568
No of plank per box	12	10	8
Kg Per Box	22.8	22.8	22.8
Box Per Pallet	60	60	60



Organization
&
High Tech RND

info@abmcosmos.com
www.abmcosmos.com